



Great Care Changes Lives.



Community Report 2018-19



The care a child receives can impact their entire future – from whether they survive, can run and play with friends, have the ability to excel in school and can experience a healthy adulthood into old age. By empowering medical professionals and scientists to reach new heights and deliver great care, our donors positively change the course of children's lives.

— Scott Fortnum
President and CEO
Children's Health Foundation



You Make Great Care Possible. You Change Lives.

When a child is seriously ill.

When their life hangs in the balance.

Status quo is not good enough.

Our children in Western Ontario deserve great care that gives them the best chance at a fulfilling childhood.

Your philanthropy and support make that possible.

Over this past year, you, and other donors like you, have given \$9.9 million to help usher in new standards of care, purchase vitally-needed medical equipment, offer care and life-enhancing programs and launch ground-breaking research – all to better protect young lives.

Medical professionals thank you. Researchers thank you. And, most importantly, patients and families thank you.

With every gift you make in support of Children's Hospital, Thames Valley Children's Centre (TVCC) and Children's Health Research Institute (CHRI), you are strengthening and transforming the health care experience for our kids in Western Ontario.

Please know that your generosity and passion for the cause are at the heart of every success highlighted in this community report.

There is still more work to be done but let's take a moment to celebrate our impact thus far and reflect on the many young lives that have been positively changed as a result of your kindness.

With sincere gratitude,

R. Scott Fortnum
President and CEO
Children's Health Foundation

Trevor Delaire
Chair, Board of Directors
Children's Health Foundation



Dairy Queen Miracle Treat Day



Miracle Mission



Corus Radiothon for Children's

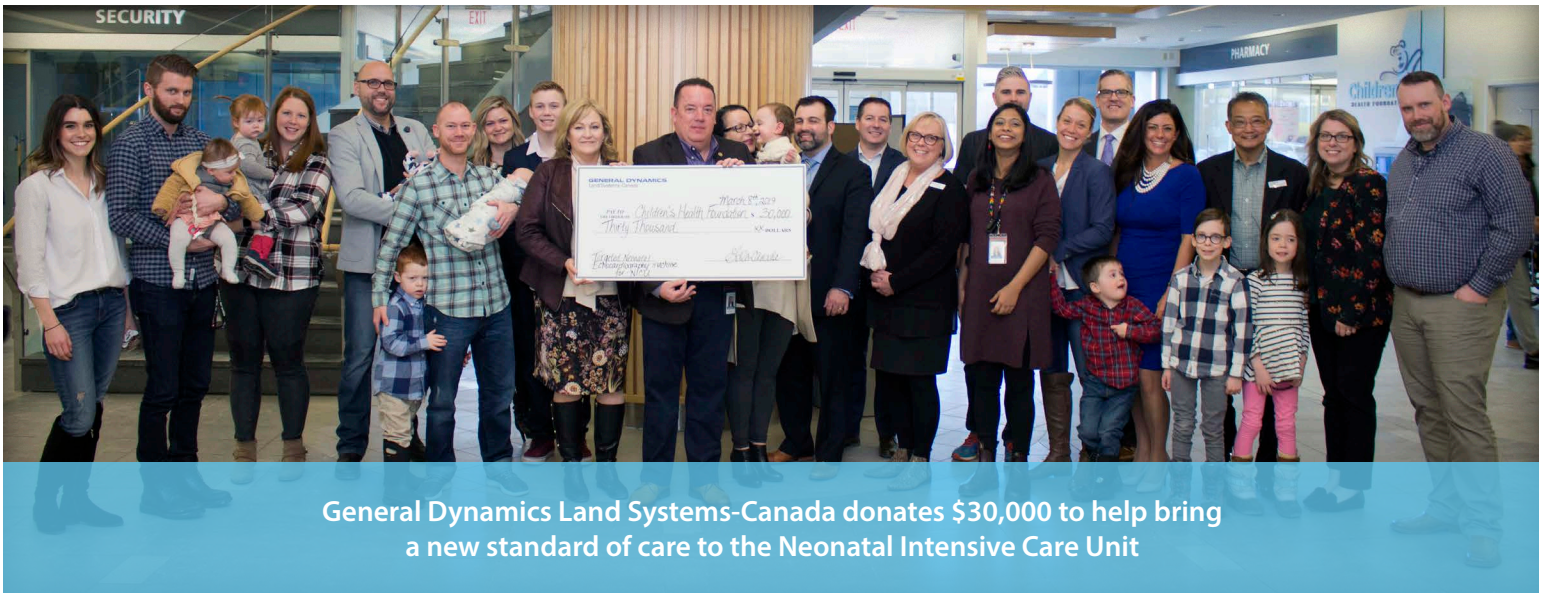


Tim Horton's Smile Cookie Week

You Are Part of an
Amazing Community.



The Lions Clubs International Foundation and District A-1 Lions Sight Conservation Foundation donates \$140,000 to help save children's eyesight



General Dynamics Land Systems-Canada donates \$30,000 to help bring a new standard of care to the Neonatal Intensive Care Unit



Dr. Beary Goode makes a special holiday delivery



Walmart May is for Miracles Campaign



Children's Magical Winter Ball



29th Annual RBC Children's Golf Classic

Your Impact in Action.

Funding Highlights for 2018-19

Giving Fragile Babies the Best Start.

Donations supported our Neonatal Intensive Care Unit in establishing a new program that will improve care for the sickest and most fragile babies. Targeted Neonatal Echocardiography (TNE) allows a trained neonatologist to visualize, in real-time and at the bedside, how well a baby's heart, lungs and circulatory system are functioning. Previously, medical professionals had to rely on indirect and late markers of dysfunction. TNE will help neonatologists identify issues earlier and with more accuracy, empowering them to make the best treatment decisions to protect babies from long-term health issues and even death.



Championing Practice to Save Lives.

Your support of the Michael Gunning Simulation Centre ensures health care teams at Children's Hospital are at their best, ready to save lives. The state-of-the-art centre offers a risk-free environment where medical professionals can practice responding to a wide variety of scenarios, from resuscitating a newborn to managing a seizing child. Centre staff also build skills in our region by providing learning opportunities to community health care providers from Stratford, Sarnia, Windsor, Chatham, Walkerton, St. Thomas and elsewhere.

Supporting Parents of Children with Disabilities.

Sending your child off to school for the first time is nerve-racking for any parent. It can be especially stressful however, when your child has special needs. There are many steps to take to ensure your little one has the best opportunity to develop their potential. Your support is helping families by connecting them to Parent Mentors. Parent Mentors share their own experiences navigating the school system with a child who has a disability. They also guide families and help them to build strong relationships within the school system.



Overcoming the Care Cliff.

Falling off a cliff – that's how many families describe the move from paediatric to adult care. The holistic, family-centred approach at Children's Hospital is so different from the adult care system that youth can find it fragmented. The independence and self-management suddenly required can be daunting. As a result, patients may stop seeking care and end up with serious complications. Your donations are empowering researchers and medical professionals to investigate and develop new processes to help young people successfully make the move to adult care.



Prescribing Smiles and Laughter.

Above the whirring medical machines, you can hear music and huge bouts of laughter at Children's Hospital. That's because there are many staff members whose sole focus is on the well-being of patients and their families. Your caring generosity brings joy and comfort to our hospital by helping to fund Ollie the Therapeutic Clown, Music Therapy, Art Therapy and the Child Life Program. These important programs enhance patients' health outcomes by teaching coping skills, decreasing stress and anxiety and mitigating trauma.



You Change Lives: Meet Calvin & Katharina.

Calvin and Katharina's births were not the start their parents wanted for them.

The twins came racing into the world more than three months before their due date.

They were both so tiny. If you held their fragile hands in your palm, they would have been no bigger than a loonie.

Corey and Charlotte worried endlessly about their precious newborns. The twins faced many complications from prematurity.

They needed help from Children's Hospital's Neonatal Intensive Care Unit to breathe and overcome serious infections and feeding issues.

Little Calvin also needed multiple surgeries because his digestive system was at risk from abdominal hernias.

There were many points in Calvin's care journey where medical professionals were concerned, that despite their best efforts, he might not make it.

"Two days after his first surgery, Calvin went into septic shock," Charlotte recalls. "His organs were failing, his blood pressure was rock bottom and his heart rate was horrible."

His medical team didn't give up. They continued to fight for his life. Thankfully, he pulled through.

After 10 months, Calvin and Katharina were finally home together.

"We never needed the hospital before this," says Charlotte. "My appreciation for our medical teams is enormous. They cared for our babies unconditionally. We couldn't have asked for more."

Today Charlotte and Corey are enjoying seeing the twins develop. They say they are both total "snuggle bums" and their smiles light up the room.

Thank you for ensuring Calvin and Katharina's medical teams had the equipment and resources they needed to give them great care and the best chance possible.




30,000+
patients
need
paediatric care


900
fragile
babies
need NICU care


15,000
Child Life
Specialist
sessions


380+
patients
safely transferred
by the Paediatric
Transport Team


1,300
hours
of therapeutic fun
with Ollie the Clown!

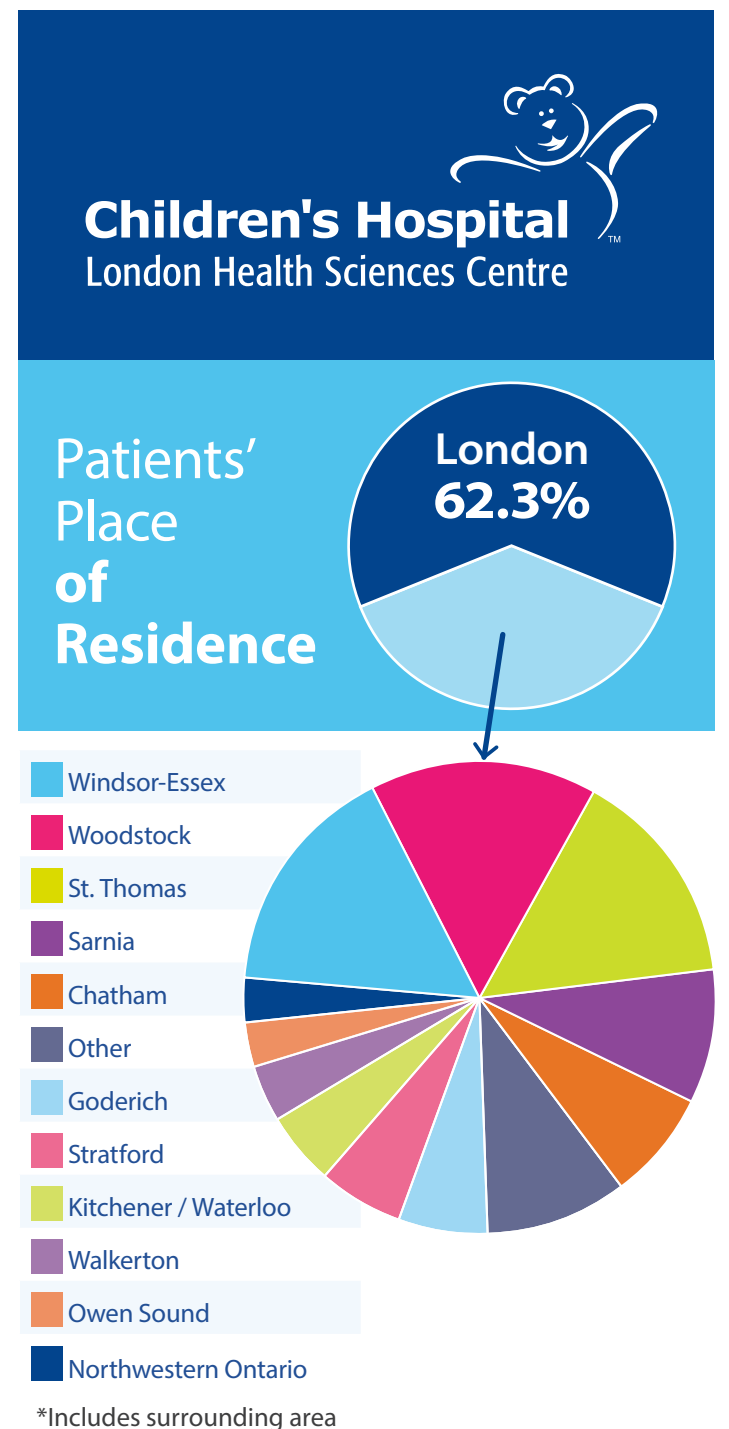

700+
critical
care
admissions


5,000
oncology
visits


37,000+
emergency
care visits


5,000
cardiac
care visits


1,500
Music Therapy
sessions



*Numbers reflect statistics in a typical year



You Change Lives: Meet Sienna.

Sienna’s future changed when a pregnancy complication deprived her tiny body of oxygen. She needed to be rescued by emergency c-section and resuscitated immediately.

Sienna came back to life but her difficult start meant she would have to overcome many challenges in the years ahead.

When her mom adopted her at four years old, she was told that Sienna couldn’t hear or speak and that her mobility was limited.

Kim refused to accept Sienna’s restrictive diagnosis. She saw potential in her new daughter and envisioned a better life for her.

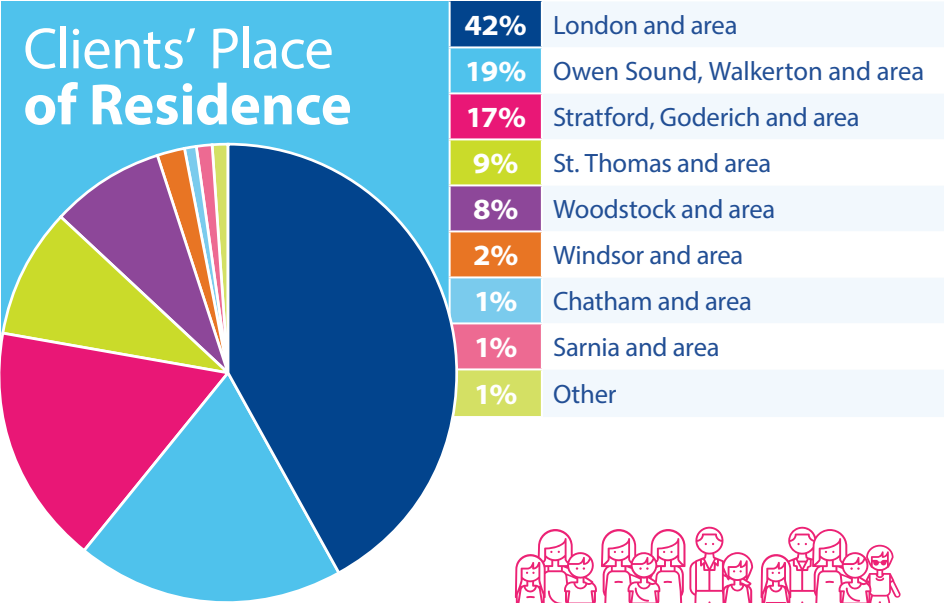
Her care for Sienna compelled her to reach out to TVCC, where staff immediately committed

to helping Sienna be at her best. They enrolled her in a variety of rehabilitative programs. Kim and her family also connected with key medical professionals at Children’s Hospital.

Through hard work and collaboration, they have helped Sienna to hear for the first time, enabled her to communicate through a speech generating device and supported her to use a power wheelchair.

“What does TVCC mean to me?” says Kim. “It means a chance for my child to be a functioning member of society, for her to be counted and to be the best person she can be. It’s unreal what TVCC has helped her to accomplish. It’s life changing.”

Thank you for giving generously to ensure kids, like Sienna, have access to great care and the support they need to discover their full potential and thrive.




55
opportunities
for kids with disabilities to try
new sports, perform live on stage, experience camp and much more


75%
of services are provided in regional offices, schools, daycares, client homes, hospitals and other community locations


10,500
clients and families served



198,000+
client hours


167
puppet shows and speeches **held to promote inclusivity**

Established in
1987

350+ peer reviewed
publications produced

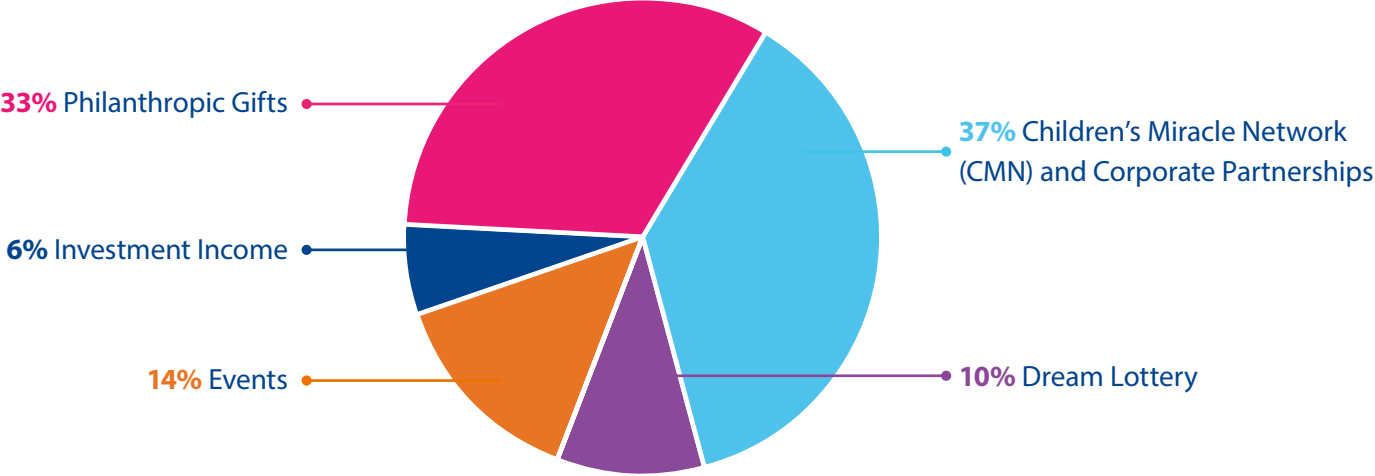

CHRI attracts nearly \$30 million
in research income


111 scientists
& associate scientists
conduct research

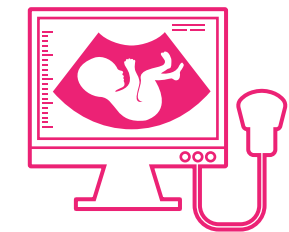

3rd largest
hospital-based child health
research institute in Canada

Thank You for Your Generosity.

2018-2019 Revenue \$10,500,000



How you supported **great care in our region** this past year:



73
pieces
of life-saving
equipment
purchased



23
programs
supported to
improve quality
of life

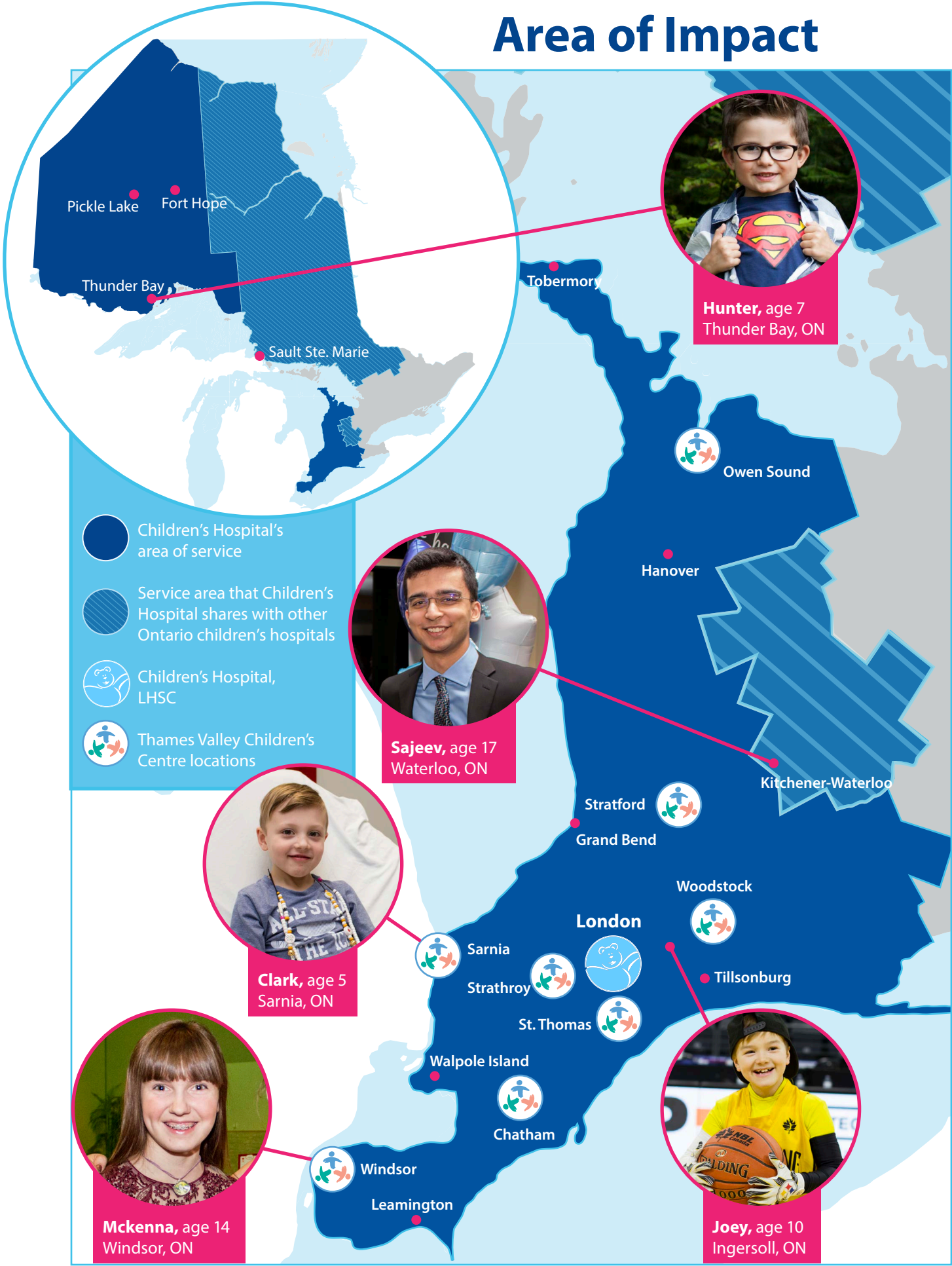


10+
leading-edge
research projects
funded



6 care
innovations
championed

Area of Impact



*Numbers reflect statistics in a typical year

A Word from our Health Care Partners.



Dr. Victor Han (left),
Dr. Jackie Schleifer Taylor
and Dr. John LaPorta.

"The impact of your philanthropy and support is felt across Children's Hospital. By donating to Children's Health Foundation, you make it possible for our hospital to stay on the cutting-edge of care so that every family has the best chance to overcome serious health issues. You help purchase 90 percent of the life-saving medical equipment our staff rely on every day. You support a wide variety of programs that significantly and positively transform the care experience for our kids. And you champion care innovations that drive us toward new possibilities. Thank you sincerely. Together, we are protecting hundreds of thousands of young patients and their families from life-threatening and life-limiting diagnoses, ensuring they live and live well."

– Dr. Jackie Schleifer Taylor, President of Children's Hospital

"Children and youth with disabilities are too often excluded from meaningful childhood experiences – even when they could be included. Physical and perceptual barriers hold them back from reaching their full potential. TVCC is determined to break down these barriers and your generosity is making that achievable. Your donations to Children's Health Foundation support a variety of programs that transform the lives of children with disabilities. From ensuring kids have access to therapeutic equipment, to providing them with the opportunity to attend camp or ride a bike for the first time, you are impacting many lives with your gifts. We would not be able to offer this dynamic set of services to our clients across Southwestern Ontario without your support. With your aid, we go a long way in assisting our clients to be at their best. As I look to retire in mid-2019, I hope you will join me in welcoming TVCC's new CEO, Ms. Jill Craven. She is well regarded throughout the national health care system and brings an extensive leadership background that will benefit TVCC and the kids we care for."

– Dr. John LaPorta, CEO of Thames Valley Children's Centre

"Donors to Children's Health Foundation make our future brighter by empowering researchers to launch innovative investigations that can lead to life-saving cures and enhanced treatments for sick children. Whether it's taking on cancer, congenital heart disease, mental illness or other health issues, your philanthropic support is a catalyst for change. You often provide the initial funding that gets many research projects off the ground. Researchers are then able to leverage their early efforts to secure significant grants (sometimes of a million dollars or more) and further their important work. Your donations also help the recruitment and training of the next generation of scientists, and to attract the best and brightest researchers to Children's Health Research Institute from around the world. Thank you for supporting our scientists to take on serious health issues so that kids in the future don't have to."

– Dr. Victor Han, Director of Children's Health Research Institute

2018-19 Children's Health Foundation Board of Directors



Mr. Trevor Delaire, Chair
Ms. Elana Johnson, First Vice Chair
Ms. Valerie Rousom, Second Vice Chair
Mr. Bob Morrill, Treasurer
Ms. Ann Marie Antoniou*
Mr. Paul Creighton
Dr. Steven Harrison
Mr. Eric Janitis
Ms. Barbara Legate
Mr. Michael Malleck*
Mr. Joel Shapiro
Ms. Justine Zavitz

London Health Sciences Centre Board Representative

Ms. Suzanne Jaekel

President and CEO, Secretary to the Board

Mr. Scott Fortnum

*Does not appear in photo



Our Vision

Saving lives and improving children's health and quality of life.



Our Mission

Inspiring caring people to donate to support excellence in children's health care and research at Children's Hospital, Thames Valley Children's Centre and Children's Health Research Institute.



345 Westminister Avenue, London, ON N6C 4V3
www.childhealth.ca | 519-432-8564

Charitable Registration #118852482RR0001



@CHFHope